



# DSP-Explorer Managed Service Monitoring Setup Requirements

ORACLE

Gold  
Microsoft Partner  


Partner



Google Cloud  
Partner

## DSP-Explorer Managed Service - Key Monitoring Pre-Requisites

The key items required to configure our monitoring product are detailed below for your reference.

1. A small monitoring hub inside your network is required, additional details can be found below.

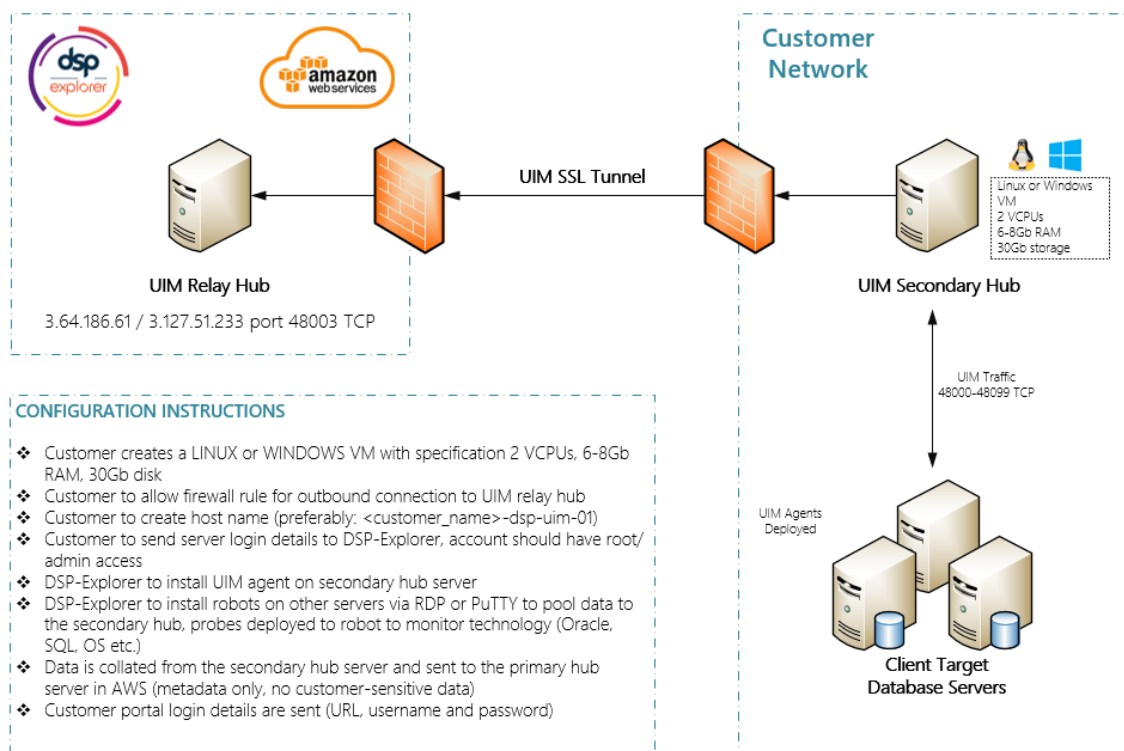
The server can be either a Windows or Linux server (Centos, Red Hat, SLES) with the following spec when using a hypervisor to provision.

- 2 VCPUs
- 6 – 8Gb RAM
- 30Gb disk space

In terms of the network requirements and general layout of the monitoring, hopefully, the picture below will help. The main communication points are listed below in case the picture is not clear.

- Bi-Directional communication is required between the hub and all servers over ports 48000 – 48099
- Outgoing communication is required between the hub and our master hub (3.64.186.61 [3.127.51.233 is backup]) over port 48003
- Root / Admin access is required to install the robot (small agent) onto each monitored server
- Root / Admin access is required to the hubs to install the required software and configuration.

## Customer UIM Hub Topology



### Contact

**Sales Enquiries:** +44 (0) 203 880 1686 | **Technical Support:** +44 (0)8701 999 377